

---

## Recent Market Volatility

August 2019

In recent days the increase in volatility in the stock market has resulted in renewed anxiety for many investors. While it may be difficult to remain calm during a substantial market decline, it is important to remember that volatility is a normal part of investing. Additionally, for long-term investors, reacting emotionally to volatile markets may be more detrimental to portfolio performance than the drawdown itself.

### INTRA-YEAR DECLINES

**Exhibit 1** shows calendar year returns for the US stock market, the world's biggest since 1979, as well as the largest intra-year declines that occurred during a given year. During this period, the average intra-year decline was about 14%. About half of the years observed had declines of more than 10%, and around a third had declines of more than 15%. Despite substantial intra-year drops, calendar year returns were positive in 33 years out of the 40 examined. This goes to show just how common market declines are and how difficult it is to say whether a large intra-year decline will result in negative returns over the entire year.

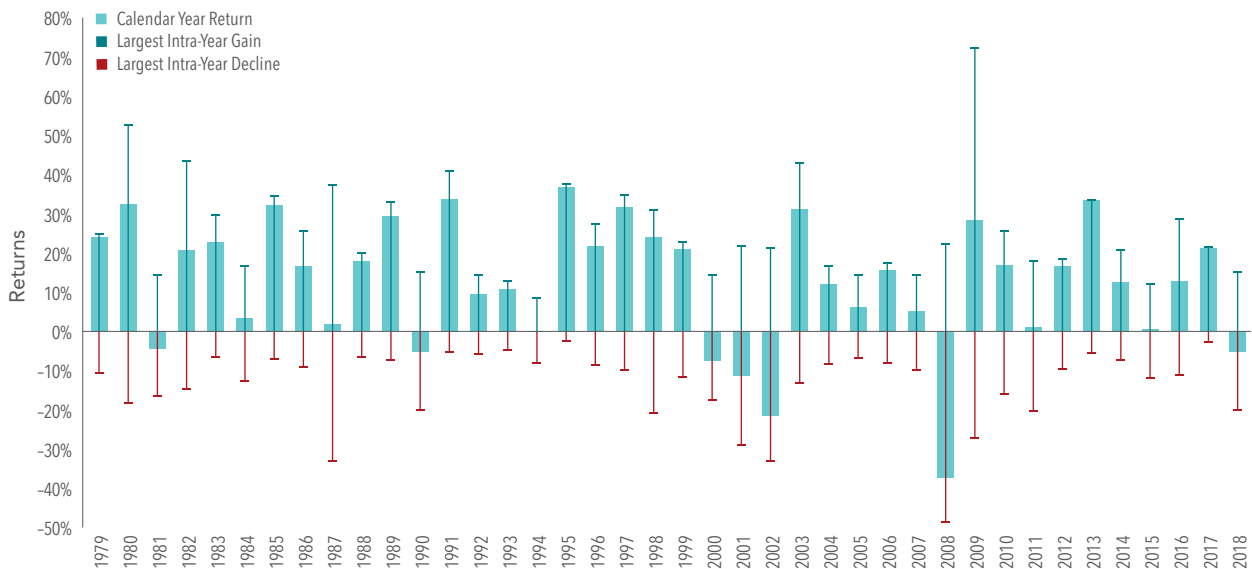
### REACTING AFFECTS PERFORMANCE

If one was to try to time the market in order to avoid the potential losses associated with periods of increased volatility, would this help or hinder long-term performance? If current market prices aggregate the information and expectations of market participants, stock mispricing cannot be systematically exploited through market timing.

While it may be difficult to remain calm during a substantial market decline, it is important to remember that volatility is a normal part of investing.

In other words, it is unlikely that investors can successfully time the market, and if they do manage it, it may be a result of luck rather than skill. Further complicating the prospect of market timing being additive to portfolio performance is the fact that a substantial proportion of the total return of stocks over long periods comes from just a handful of days. Since investors are unlikely to be able to identify in advance which days will have strong returns and which will not, the prudent course is likely to remain invested during periods of volatility rather than jump into and out of stocks. Otherwise, an investor runs the risk of being on the sidelines on days when returns happen to be strongly positive.

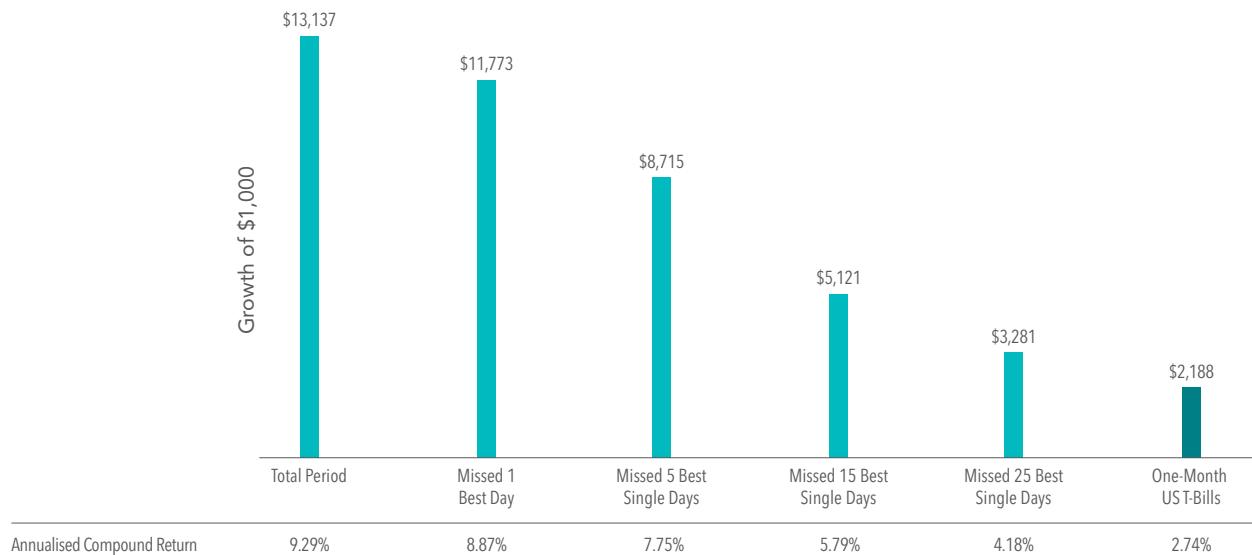
**Exhibit 1: US Market Intra-year Gains and Declines vs. Calendar Year Returns, 1979–2018**



**Past performance is not a guarantee of future results.**

In US dollars. US Market is the Russell 3000 Index. Largest Intra-Year Gain refers to the largest market increase from trough to peak during the year. Largest Intra-Year Decline refers to the largest market decrease from peak to trough during the year. Frank Russell Company is the source and owner of the trademarks, service marks, and copyrights related to the Russell Indexes. Data is calculated off rounded daily returns.

**Exhibit 2: Performance of the S&P 500 Index, 1990–2018**



**Past performance is not a guarantee of future results.**

In US dollars. For illustrative purposes. The missed best day(s) examples assume that the hypothetical portfolio fully divested its holdings at the end of the day before the missed best day(s), held cash for the missed best day(s), and reinvested the entire portfolio in the S&P 500 at the end of the missed best day(s). Annualised returns for the missed best day(s) were calculated by substituting actual returns for the missed best day(s) with zero. S&P data © 2019 S&P Dow Jones Indices LLC, a division of S&P Global. All rights reserved. "One-Month US T- Bills" is the IA SBBI US 30 Day TBill TR USD, provided by Ibbotson Associates via Morningstar Direct. Data is calculated off rounded daily index values.

**Exhibit 2** helps illustrate this point. It shows the annualised compound return of the S&P 500 Index going back to 1990 and illustrates the impact of missing out on just a few days of strong returns. The bars represent the hypothetical growth of \$1,000 over the period and show what happened if you missed the best single day during the period and what happened if you missed a handful of the best single days. The data shows that being on the sidelines for only a few of the best single days in the market would have resulted in substantially lower returns than the total period had to offer.

## CONCLUSION

While market volatility can be nerve-racking for investors, reacting emotionally and changing long-term investment strategies in response to short-term declines could prove more harmful than helpful. By adhering to a well-thought-out investment plan, ideally agreed upon in advance of periods of volatility, investors may be better able to remain calm during periods of short-term uncertainty.

---

**IF YOU ARE A RETAIL INVESTOR IN THE UK, IRELAND, GERMANY OR THE NETHERLANDS, THIS DOCUMENT HAS BEEN PROVIDED TO YOU BY YOUR FINANCIAL ADVISER, WHO CAN HELP EXPLAIN ITS CONTENTS.**

**WHERE ISSUED BY DIMENSIONAL IRELAND LIMITED**

Issued by Dimensional Ireland Limited (DIL), with registered office 10 Earlsfort Terrace, Dublin 2, D02 T380, Ireland. DIL is regulated by the Central Bank of Ireland (Registration No. C185067).

**WHERE ISSUED BY DIMENSIONAL FUND ADVISORS LTD.**

Issued by Dimensional Fund Advisors Ltd. (DFAL), 20 Triton Street, Regent's Place, London, NW1 3BF. Company Number 02569601. DFAL is authorised and regulated by the Financial Conduct Authority (FCA) - Firm Reference No. 150100.

Neither DIL nor DFAL, as applicable, (each an "Issuing Entity," as the context requires) give financial advice. You are responsible for deciding whether an investment is suitable for your personal circumstances, and we recommend that a financial adviser helps you with that decision. Information and opinions presented in this material have been obtained or derived from sources believed by the Issuing Entity to be reliable, and the Issuing Entity has reasonable grounds to believe that all factual information herein is true as at the date of this document.

The Issuing Entity issues information and materials in English and may also issue information and materials in certain other languages. The recipient's continued acceptance of information and materials from the Issuing Entity will constitute the recipient's consent to be provided with such information and materials, where relevant, in more than one language.

The information in this material is intended for the recipient's background information and use only. It is provided in good faith and without any warranty or representation as to accuracy or completeness. Information and opinions presented in this material have been obtained or derived from sources believed by the Issuing Entity to be reliable, and the Issuing Entity has reasonable grounds to believe that all factual information herein is true as at the date of this document. It does not constitute investment advice, recommendation or an offer of any services or products for sale and is not intended to provide a sufficient basis on which to make an investment decision. It is the responsibility of any persons wishing to make a purchase to inform themselves of and observe all applicable laws and regulations. Unauthorised reproduction or transmitting of this material are strictly prohibited. The Issuing Entity does not accept responsibility for loss arising from the use of the information contained herein.

References to "Dimensional" in this material include the Dimensional separate but affiliated entities generally, rather than one particular entity. These entities are Dimensional Fund Advisors LP, Dimensional Fund Advisors Ltd., DFA Australia Limited, Dimensional Fund Advisors Canada ULC, Dimensional Fund Advisors Pte. Ltd., Dimensional Ireland Limited, Dimensional Japan Ltd. and Dimensional Hong Kong Limited. Dimensional Hong Kong Limited is licensed by the Securities and Futures Commission to conduct Type 1 (dealing in securities) regulated activities only and does not provide asset management services.

**RISKS**

**Investments involve risks. The investment return and principal value of an investment may fluctuate so that an investor's shares, when redeemed, may be worth more or less than their original value. Past performance is not a guarantee of future results. There is no guarantee strategies will be successful.**

dimensional.com